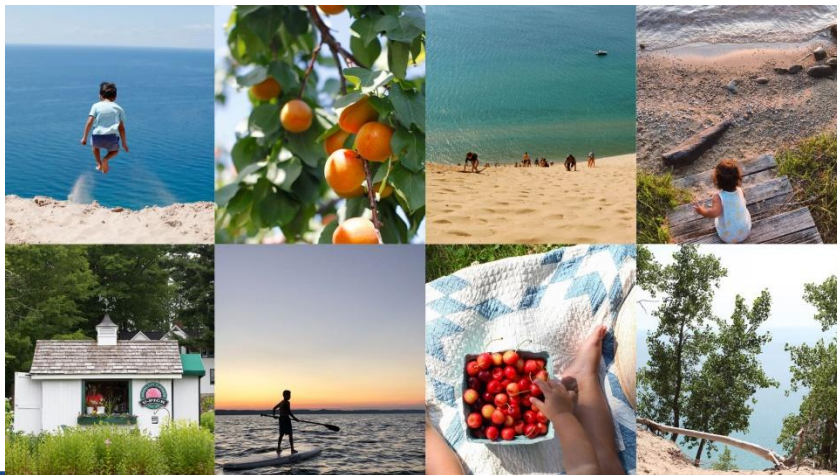




LANSING CHAPTER OF THE ASSOCIATION OF CERTIFIED FRAUD EXAMINERS

Welcome to Summer!

It's feeling like a beautiful Michigan summer is beginning. What are your goals for this season? Maybe you have a professional goal? Or something you want to do with family or friends? Possibly you want to finish a book, run a marathon, do something you've never done, or meet a personal challenge? In order to reach those goals, put them on your calendar today. For a bigger goal that you need to work toward, include milestones along the way to make progress. Don't let the season slip by; have an intention to make this summer special and execute your plan!



In This Issue

**Fraud Talk Podcast:
30 Years of Occupational Fraud
Insights: Making the Report to the
Nations**

Upcoming Events

LACFE Spring Conference

In The News

**Key Findings from Occupational
Fraud 2026: A Report to the Nations**



Fraud Talk Podcast

30 Years of Occupational Fraud Insights: Making the Report to the Nations - John Warren and Andi McNeal - Episode 167

In this episode of Fraud Talk, ACFE CEO John Warren, J.D., CFE, and Chief Training Officer Andi McNeal, CFE, CPA, join the show to explore Occupational Fraud 2026: A Report to the Nations — from its origins to its impact in the anti-fraud profession. The conversation traces the biennial report's evolution over three decades, beginning with the first edition in 1996 to its role today as a global benchmark built on thousands of detailed case submissions provided by Certified Fraud Examiners (CFEs).

<https://acfe.podbean.com/e/30-years-of-occupational-fraud-insights-making-the-report-to-the-nations-john-warren-and-andi-mcneal-episode-167/>

UPCOMING EVENTS

LOCAL:

Michigan Chamber of Commerce: 2026 CHAMBER DAY

In-Person, Michigan State Capital, Heritage Hall

June 17, 2026

Learn more: <https://www.michamber.com/chamberday/>



MICPA: Government and Nonprofit Frauds and Controls to Stop Them

In-Person, Okemos Event Center, Okemos, MI

June 29, 2026

Learn more: <https://www.micpa.org/cpe/store/course-detail?ProductId=205720&return=1~1>

NATIONAL:

ACFE: 37th Annual Global Fraud Conference

Online or In-Person

July 12 - 17, 2026

Learn more: <https://www.fraudconference.com/>

*Please let our President, **Meghan**, know if you are attending the 2026 ACFE Global Fraud Conference as there are group discounts available if enough LACFE members attend.*

ACFE: Investigative Responsibility: The Need to Get It Right

Webinar

August 6, 2026

Learn more: [Event Details](#)

Philadelphia Area Chapter of the ACFE: Your Project Isn't Telling You the Truth: The Warning Signs That Never Appear In Dashboards, Reports, Or Slide Decks

Virtual

August 25, 2026

Learn more: <https://philacfe.starchapter.com/meetinginfo.php?id=55&ts=1768852556>

Help me create your newsletter! If you have an event that you would like posted or if you wish to share an article or job opening, please contact Jennifer Oswald at newsletter@lansingacfe.com



LACFE Spring Conference

The Lansing Chapter's fraud training for Spring 2026 was an in-depth Fraud Lab experience led by speaker Dr. Toby Groves. The training focused on getting the audience to view potential evidence from a different angle, think on a much deeper level and recognize your biases and thought processes and how they change your thoughts and actions.

For example, stress is not inherently bad. If you think stress is bad or harmful to you, it will be. However, if you view stress as helpful to your preparation and helping you focus on a task, it will be. Your mind and through process is the difference.

Dr. Groves engaged the audience throughout the day with a real-world example of fraud. He provided facts and evidence from the case and the class participants asked questions to dig deeper into the facts and investigated the potential fraud together. Dr. Groves challenged us all to think beyond the typical questions. How can we uncover a fraud that everyone (including auditors) missed? As we investigated together, fellow participants asked questions I hadn't considered. Dr. Groves highlighted that each of us will test and investigate a potential misdeed from a different angle based on previous experiences.

In order to be a better auditor or investigator, we need to continually consider and view a document, a case, or a problem through a different lense. Good thinking has a surface structure and a deep structure. We need to work quite hard to develop our thinking at the deeper structure instead of relying on our first thoughts and conclusions of surface level thinking.

As fraud examining professionals, much of our training discusses biases – both recognizing they exist and how to overcome them. Dr. Groves made me consider not just how I think through a problem but also the 'why' behind my thinking.

If you missed the training, I highly recommend you seek out another training from Dr. Groves. He is a thorough educator as well as a great story teller and engaging speaker.

Stay tuned for announcements of future training sessions from the LACFE. We're working on planning for the Fall conference, though the LACFE Conference Committee hasn't set dates yet.

We'd like your input! The Conference Committee is looking for additional talent and ideas from all LACFE members. Reach out to President, [Meghan Frye](#), to receive a link to the next meeting, June 23rd at 10:00 am.

In The News

- 3/10/26 - [Office of Public Affairs | Tennessee Tax Preparer Pleads Guilty to \\$80M Pandemic-Relief Fraud Scheme | United States Department of Justice](#)
- 3/18/26 - [Questions swirl around US plans for record \\$15B Prince Group crypto seizure - ICIJ](#)
- 4/2/26 - [Laundering Ill-Gotten Gains From Healthcare Insurance Fraud Schemes | Law.com](#)
- 4/8/26 - [Why We Should All Be Pulling for the Baltimore Inspector General - Audit Beacon](#)
- 4/8/26 - [Acting AG Blanche says DOJ probing 8,000 fraud cases worth \\$1 trillion | Fox News](#)
- 4/20/26 - [FAFSA Fraud Detection Details Released | ncan.org](#)
- 5/4/26 - [Dismantling the financial networks behind human trafficking-enabled scams | ACAMS](#)
- 5/6/26 - [SEC.gov | SEC Charges 21 Individuals with Alleged Wide-Reaching Insider Trading Scheme](#)
- 5/12/26 - [Office of Public Affairs | Michigan Home Health Care Agency Owner Convicted of \\$1.6M Medicare Fraud Scheme and Kickback Conspiracy | United States Department of Justice](#)
- 5/13/26 - [New FBI data: crime drops across California as retail theft enforcement recovers \\$75 million in stolen goods](#)
- 5/15/26 - [CMS' New Approach to Federal Medicaid Spending in Cases of Potential Fraud | KFF.org](#)
- 5/19/26 - [When Anyone Can Be Anyone: AI and the Identity Crisis in Finance | ACAMS](#)
- 5/20/26 - [Magnificent Humanity - The Pope's First Encyclical Concerns AI - Future of Life Institute](#)
- 5/20/26 - [Unrelated Relators: DOJ Launches FOCUS Initiative as Data-Driven FCA Filings Surge - velaw.com](#)
- 5/21/26 - [Licenses for Sale | Montana | DMV Fraud | Fraud of the Day](#)
- 5/26/26 - [Auditor independence: What's behind the SEC's latest push to relax the rules, again? Part 1](#)
- 5/27/26 - [Office of Public Affairs | Civil Division Moves to Fast-Track Benefits Fraud Enforcement | United States Department of Justice](#)

- 5/27/26 - [Justice Dept. to start fast-tracking benefits fraud enforcement](#)
- 6/3/26 - [Former U.S. Postal Service employees sentenced in \\$63M mail theft scheme CBS News](#)
- 6/4/26 - [Rochester Hills man sentenced to 10 years in \\$63M mail theft, check fraud scheme ClickOnDetroit](#)
- 6/4/26 - [Office of Public Affairs | National Fraud Enforcement Division's Healthcare Fraud Unit Secures Six Trial Convictions Involving over \\$1.1 Billion in Fraud In Under Three Weeks: Convictions Span five Federal Districts & six Distinct Categories of Healthcare Fraud | United States Department of Justice](#)
- 6/4/26 - [Office of Public Affairs | Fraud Division Announces Federal–State Partnership in Ohio to Prosecute Fraud | United States Department of Justice](#)
- 6/4/26 - [DoJ Disrupts Southeast Asia Crypto Fraud Networks, Freezes \\$3.8 Million in Assets](#)
- 6/4/26 - [Hackers Spied on a Stock Exchange Executive's Outlook Mailbox for Five Months](#)
- 6/5/26 - [FinCEN's Proposed New AML Rules: What You Need to Know](#)
- 6/5/26 - [Treasury warns banks of 'red flags' tied to customers in the U.S. illegally PBS.org](#)
- 6/5/26 - [Addiction Recovery Care Founder Tim Robinson Indicted in Federal Court — ProPublica](#)
- 6/5/26 - [Office of Public Affairs | Union Leaders Convicted of Racketeering, Fraud, and Embezzlement of Union Dues | United States Department of Justice](#)
- 6/5/26 - [FIFA World Cup 2026 Scams Are Already Live: Fake Sites, Banking Malware, and Stolen Logins](#)
- 6/5/26 - [DOJ announces 6 convictions of health care fraud in 3 weeks](#)
- 6/6/26 - [Free Apps Are Quietly Turning Smart TVs Into Web-Scraping Proxies for AI](#)
- 6/7/26 - [Infamous short seller's fraud conviction has spooked other shorters — and experts warn the industry may go silent](#)

Key Findings from Occupational Fraud 2026: A Report to the Nations

May 19, 2026

<https://www.acfe.com/acfe-insights-blog/blog-detail?s=key-findings-report-to-the-nations-2026>

What are the biggest fraud risks organizations face today and which anti-fraud measures are making the greatest difference? Key findings from the ACFE's Occupational Fraud 2026: A Report to the Nations reveal emerging global patterns in fraud schemes, detection methods, financial impact and the controls most strongly associated with reducing losses.

Occupational fraud remains a persistent threat to organizations of every size, industry and region.

The Association of Certified Fraud Examiners' (ACFE) newly released Occupational Fraud 2026: A Report to the Nations analyzes 2,402 real-world occupational fraud cases investigated by Certified Fraud Examiners (CFEs) across 143 countries and territories, offering one of the most comprehensive benchmarks available for understanding how occupational fraud occurs, how it is uncovered and how organizations can better protect themselves.

Collectively, cases in this study caused more than \$3.4 billion in losses, with a median loss of \$104,000 per case and an average loss exceeding \$1.4 million. For anti-fraud professionals, organizational leaders and risk managers, the findings emphasize both the scale of occupational fraud and the value of proactive fraud prevention strategies.

Fraud schemes are costly and diverse

Asset misappropriation schemes, which involve the theft or misuse of organizational resources, are still the most common form of occupational fraud, appearing in 90% of cases. While these schemes were the least costly category by median loss, they pose substantial organizational risk due to their frequency.

Corruption schemes, including bribery and conflicts of interest, appeared in 45% of cases, while financial statement fraud schemes, which involve intentional misstatements or omissions in an organization's financial reports, remained less common at 6% yet caused the highest median losses at \$1 million per case.

Billing schemes, theft of noncash assets, and check and payment tampering continued to represent some of the most significant fraud risks when balancing both frequency and financial damage.

Detection speed directly impacts losses

The report indicates a clear relationship between fraud duration and financial damage.

The median fraud scheme lasted 12 months before detection, but schemes that persisted longer resulted in dramatically greater losses. Fraud detected within the first six months had a median loss of \$40,000, while schemes lasting more than five years caused median losses exceeding \$1.1 million.

Tips were once again the most frequently used detection method, accounting for 43% of cases. More than half of those tips came from employees, reinforcing the importance of internal reporting cultures and accessible whistleblower mechanisms.

Notably, email and web-based reporting channels both surpassed telephone hotlines as the most common form of reporting methods.

Anti-fraud controls make a measurable difference

Organizations with effective anti-fraud controls in place consistently experienced lower losses and faster fraud detection.

Controls such as management review, proactive data monitoring and surprise audits were associated with stronger outcomes. Fraud awareness training also continued to demonstrate measurable effectiveness, with more than twice as many tips coming from employees who received fraud awareness training. In addition, organizations that trained both staff-level employees and management reported median fraud losses at \$84,000 per case, while organizations that did not provide training to either group saw median losses reach \$150,000 per case.

More than half of all cases involved either a lack of internal controls or an override of existing controls, underscoring the critical need for fraud prevention programs as fraud risks evolve.

Authority and tenure amplify risk

Fraud risk increases significantly with authority, tenure and collusion.

Median losses caused by owners and executives were more than nine times greater than those caused by employees. Similarly, schemes involving multiple perpetrators resulted in substantially greater financial harm than those committed by a single individual.

Additionally, 84% of perpetrators displayed at least one behavioral red flag before detection, illustrating the value of awareness and early intervention.

Practical implications for organizations

The findings from the Report to the Nations reinforce several insights:

- Occupational fraud affects every sector.
- Small organizations often face heightened vulnerability.
- Internal reporting plays a central role in detection.
- Strong internal controls materially reduce risk.
- Fraud prevention requires active and sustained investment.

For organizations seeking to benchmark anti-fraud programs, strengthen controls or improve detection capabilities, the report offers actionable data grounded in real investigative experience.

Occupational Fraud 2026: A Report to the Nations includes expanded analysis, regional breakdowns, industry data and fraud prevention resources specifically designed to help organizations fight fraud. Download the full report, charts and supporting materials at [ACFE.com/RTTN](https://www.acfe.com/RTTN).